

CERTIFICATE OF LOCATION OF GOVERNMENT CORNER

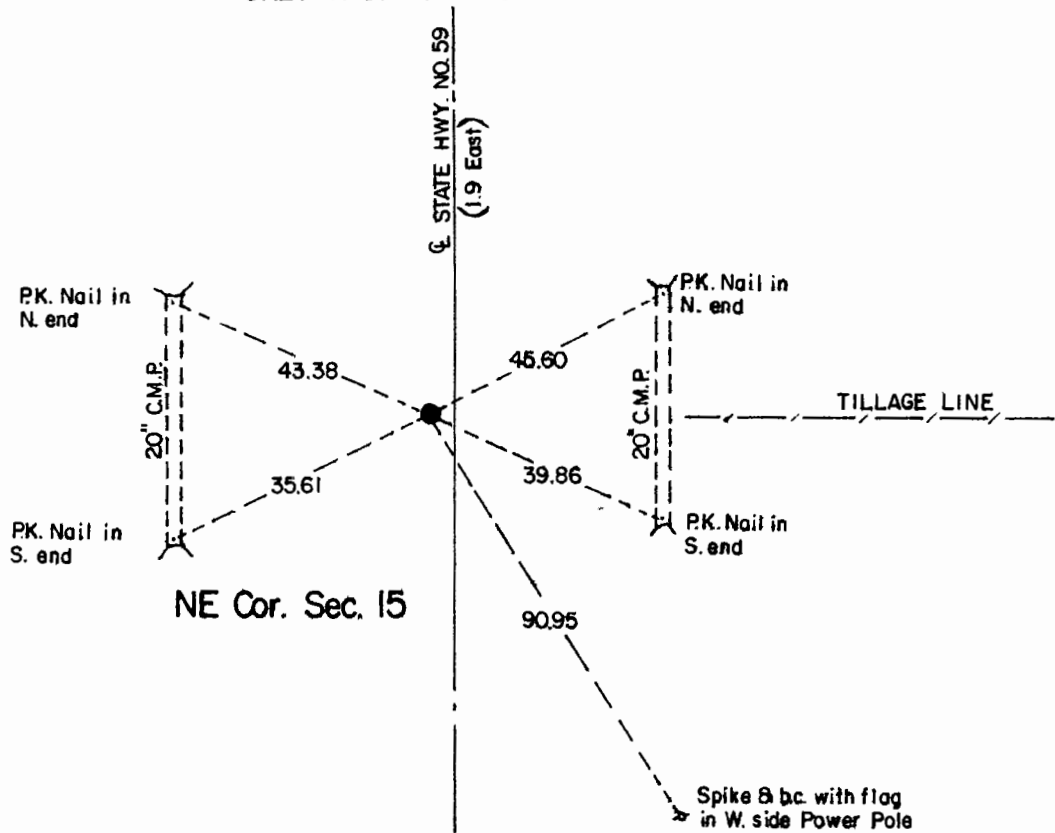
Northeast Corner of Section **15** , Township **107** , Range **41** 5th P.M.

STATE OF MINNESOTA, County of Murray.

Statement: Aug. 22, 1989 - Found a brass plug in old concrete pavement
Removed the monument and placed a 3/4 inch iron pipe in the pavement surface.



SKETCH OF REFERENCE TIES



Statement of evidence relative to this corner location is on the back of page.

I hereby certify that this document and the data contained herein was prepared by me or under my direct supervision and that I am a duly Registered Land Surveyor under the laws of the State of Minnesota.

Duane A. Bonnema
Duane A. Bonnema

Nov 4, 1989
Date

Minnesota Registration No. 14895

OFFICE OF THE COUNTY RECORDER
COUNTY OF MURRAY

NOV 15 1989

I hereby certify that this document was filed in the County Recorder's office at ___ M. on the ___ day of _____ A.D., 19__

County Recorder _____

By _____, Deputy

DOCUMENT NO. _____

Northeast Cor. Sec. 15 T107N-R41W

Statement:

- August 1861 Original Government Land Office Surveyor L. G. M. Fletcher records in his field notes, "built mound with trench pits, charred stake, per instructions."*
- 1932 The Minnesota Department of Highways, in their field notes taken during the construction of the State Highway No. 59 records, "Sta 353+14.2/Sec. Cor. 1.9 Left of center line/ Brass Plug in place."*
- Aug. 22, 1989 Duane A. Bonnema, L.S. Reg. No. 14895, removed 4 in. of asphalt pavement and found the brass plug which was placed in the concrete road surface by the Minnesota Department of Highways in 1932. The brass plug was found 1.9 feet left (or west) of the highway centerline. This brass plug appears to be the best available evidence of the Section Corner location.*